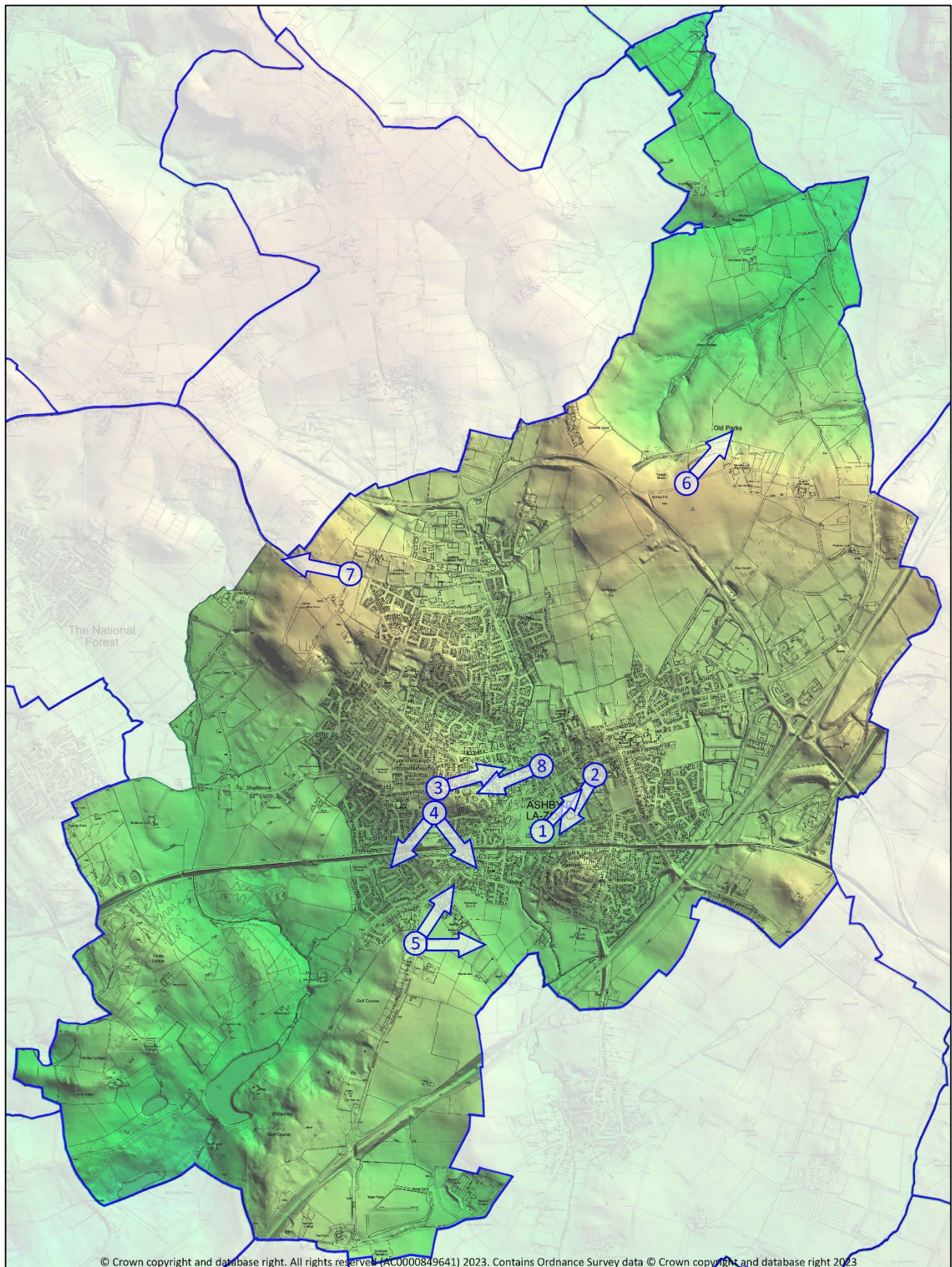


## APPENDIX 5

# IMPORTANT VIEWS IN ASHBY DE LA ZOUC

### Location map



## Evidence base

1. From the Bath Grounds OSSR, northeast over Bullen's Field to the historic group of buildings around Ashby castle and the parish church (with community sports event in the foreground)



2. From Ashby Castle over a series of green open spaces (including Bullen's Field) leading the eye without interruption into attractive open countryside. This important view connects the medieval castle with its landscape.



3. From Kilwardby Street, looking east along Market Street into Ashby town centre, with the historic St Helen's church surrounded by trees on the hilltop in the distance.



4. View south (SSW – SSE) from Ashby Cemetery to Willesley and toward Packington and Packington Nook, with Ashby allotments on right hand side and across the Sence valley towards Nuneaton (with the wind turbine at Normanton le Heath on the horizon).



5. Northeast from Measham Road opposite Willesley Park golf course. View over parkland / open countryside with mature trees and old ridge and furrow pasture (in the distance) toward the outskirts of Ashby. This is a valued gateway view.



The same view in early spring 250m nearer town, with ridge and furrow clearly seen on the right.



East from the golf course



6. Northeast from near Money Hill across high open countryside to the parish boundary in the direction of Staunton Harold. This is on one of the few 'wide view' walks in the Neighbourhood Area



7. From the west side of Ashby, one of several views from the high ground in the Ingles Hill area westward into rural open countryside.



8. From Market Street, west to Holy Trinity church. This view and #3 together help to define the layout and character of Ashby's historic town centre

